

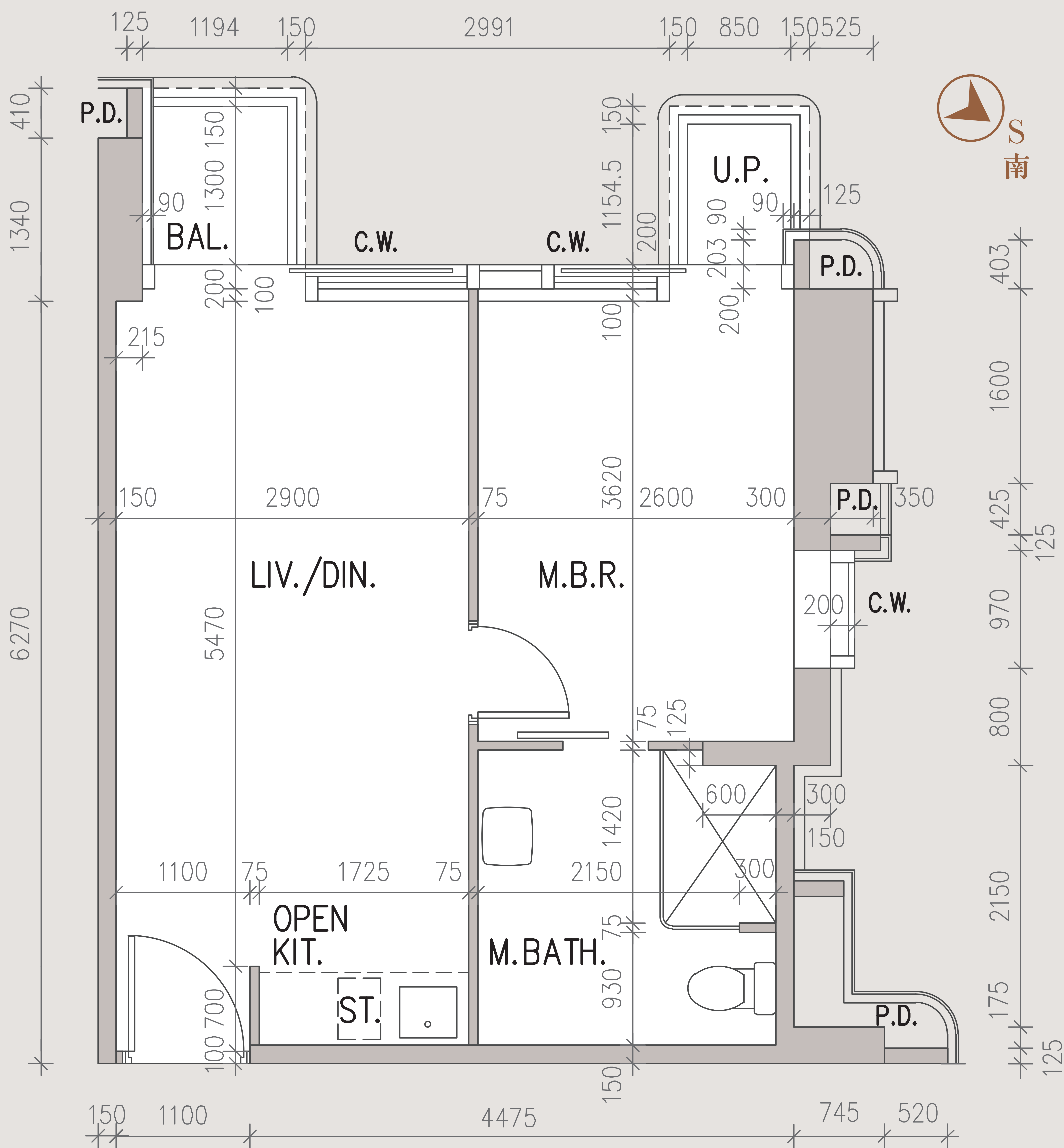
ONE CENTRAL PLACE

19 Floor
樓

Unit
單位

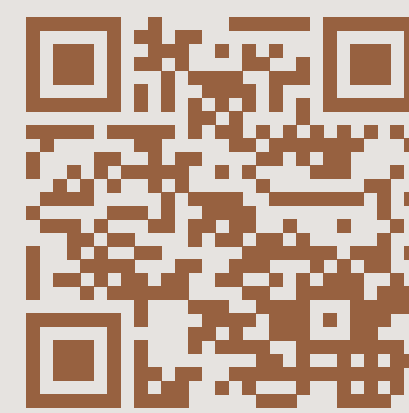
E

Unmodified Show Flat
無改動示範單位



Scale 0M/米
比例

e-Floor Plan
電子樓面平面圖



Saleable Area 實用面積

(Including Balcony, Utility Platform, if any)
(包括露台、工作平台(如有))

Square feet
平方呎

458

Square metre
平方米

42.553

Balcony
露台

Square feet
平方呎

22

Square metre
平方米

2.000

Utility Platform
工作平台

Square feet
平方呎

16

Square metre
平方米

1.500

The dimensions in the floor plans are all structural dimensions in millimetre. 樓面平面圖所列之尺寸為以毫米標示之建築結構尺寸。

Legend 圖例：

BAL. = Balcony = 露台

C.W. = Curtain Wall = 玻璃幕牆

LIV./DIN. = Living/Dining Room = 客/飯廳

M. BATH. = Master Bathroom = 主人浴室

M.B.R. = Master Bedroom = 主人睡房

OPEN KIT. = Open Kitchen = 開放式廚房

P.D. = Pipe Duct = 管道槽

ST. = Cooking Stove = 煮食爐

U.P. = Utility Platform = 工作平台

Remarks:

- The above areas as specified in square feet are converted from the areas in square metre at a rate of 1 square metre = 10.764 square feet and rounded off to the nearest whole square feet, which may be slightly different from that shown in square metres.
- There is no verandah in the residential properties of the Development.
- The saleable area of the residential property and the floor area of balconies, utility platforms and verandahs (if any) are calculated in accordance with section 8 of the Residential Properties (First-hand Sales) Ordinance and the areas of other specified items (not included in the saleable area) are calculated in accordance with Part 2 of Schedule 2 of the Residential Properties (First-hand Sales) Ordinance.
- The thickness of the floor slabs (excluding plaster) of Unit E on 19/F of the Development as provided in the approved building plans for the Development: 150 & 175mm.
- The floor-to-floor height of Unit E on 19/F of the Development as provided in the approved building plans for the Development: 3100, 3375 & 3450mm.
- Please refer to the sales brochure for details.

備註:

- 上述以平方呎所列之面積由以平方米所列之面積以1平方米=10.764平方呎換算並四捨五入至整數平方呎之方法計算得出。與以平方米表述之面積可能有些微差異。
- 發展項目住宅物業並無陽台。
- 住宅物業的實用面積以及露台、工作平台及陽台(如有)的樓面面積，是按照《一手住宅物業銷售條例》第8條計算得出的。其他指明項目的面積(不計算入實用面積內)，是按照《一手住宅物業銷售條例》附表2第2部計算得出的。
- 按發展項目的經批准的建築圖則所規定者，發展項目19樓E單位的樓板的厚度(不包括灰泥)：150及175毫米。
- 按發展項目的經批准的建築圖則所規定者，發展項目19樓E單位的層與層之間的高度：3100、3375及3450毫米。
- 詳情請參閱售樓說明書。